

# PRINTING DIRECTIONS

---

This brochure is intended for **personal** and/or **non-commercial use**.

When printing this document...

- Select page range "2-4"
- Select "Fit to page"
- Select "Print on BOTH sides" and "Flip on SHORT edge"

Fold double-sided page 2-3 as a tri-fold brochure using dotted guidelines. Give page 4 to your kids to mark their progress.

If you have any questions or comments, please drop me a line at [hello@gortmanillustration.com](mailto:hello@gortmanillustration.com).

If you are a local business and would like to print this brochure in mass to give away or sell to your customers, please contact me to purchase a license.

Have fun!

Warmly,  
Polina Gortman

[www.gortmanillustration.com](http://www.gortmanillustration.com)

Text and illustrations © Polina Gortman 2023

Continue walking North along Front St N for another 5 minutes. Notice small salmon statues as you cross a bridge over **East Fork Issaquah Creek**. Go past Espresso shop on the corner of Front St N and NE Crescent Dr into the parking lot in front of the La-Z-Boy store. The small statue will be on your right hand side as you enter the parking lot.



## McNugget a rooster

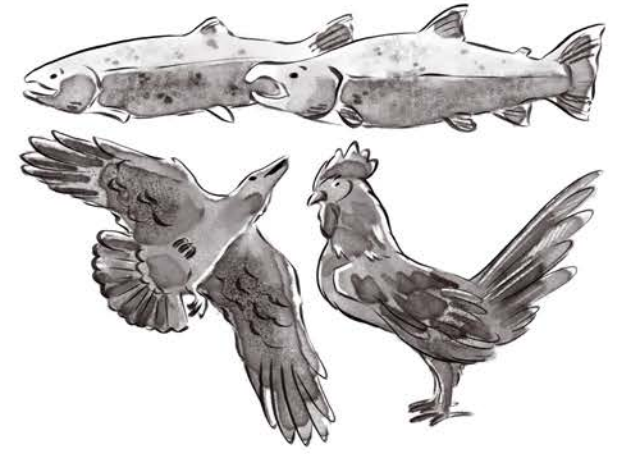
628 Front St North  
Issaquah, WA

Can you find a special statue in memory of McNugget, the friendly rooster who used to hang out by an espresso stand? Despite his small size, McNugget had a big personality and was beloved by locals and visitors alike for 13 years since he escaped a grain supply store in 2002. He had jet-black feathers and slept in a maple tree nearby. McNugget loved to explore Issaquah Creek and would sometimes chase after people on bikes or motorcycles. He even bossed around his own flock of pigeons! McNugget would often fly up to the espresso counter to greet guests and receive yummy treats such as chicken feed and mealworms.

# TIPS

- All statues are a walking distance from one another. The walk takes about one hour.
- Bring cash to toss into the Finley statue at the Friends of Issaquah Salmon Hatchery.
- If you visit during fall, consider coordinating with the Salmon Days at the Hatchery.
- Kids might want to spend extra time at the Issaquah Library, at the playground by Issaquah City Hall, or visit Issaquah Depot Museum.
- Take pictures with the statues to make a fun family album.
- If you want to see more animal statues and some awesome animals, visit Cougar Mountain Zoo. It's only an 8-minute drive from Issaquah Library.

Find more at  
[www.gortmanillustration.com](http://www.gortmanillustration.com)



ISSAQUAH, WA

# ANIMAL STATUE SCAVENGER HUNT

CAN YOU FIND THEM ALL?  
1-HOUR LOOP WALK

BY POLINA GORTMAN



Park at **Issaquah Library** parking lot. Walk down West Sunset Way to Friends of the Issaquah Salmon Hatchery. After meeting Gilda & Finley, turn around to see a wooden sculpture of an eagle catching a salmon.



## Gilda & Finley a pair of Coho salmon

125 West Sunset Way  
Issaquah, WA

Have you ever heard of Gilda and Finley? They're the famous couple of huge bronze statues that you can find near the entrance of the Friends of Issaquah Salmon Hatchery. They were created by the artist Tom Jay back in 1999, and they look just like real-life Coho salmon (but much bigger)! Gilda is leading the way with her big round belly filled with roe, and Finley is following close behind with his massive hook jaw and sharp teeth. Look around the sculpture and notice things you'd expect to find by a river in the Pacific Northwest, like rocks, boulders, logs, and native plants. Before you move on, don't forget to drop a coin into the small slit near Finley's dorsal fin to help the Friends of Issaquah Salmon Hatchery!

Go back to West Sunset Way and take a 5-minute walk to **Issaquah City Hall**. As you pass **Issaquah Library**, notice a **soaring raven** statue on one of the pillars. Continue past two gorgeous **lion dogs** at Macky's Dim Sum and a **roaring bear** in front of Rolling Log Tavern.



## Valiant Effort an eagle & a salmon

130 East Sunset Way  
Issaquah, WA

Fly like an eagle to Issaquah City Hall to look for the next animal! There, you'll see an amazing bronze sculpture of a hunting eagle made by an artist named Doug Eck. This statue represents the tough fight for survival in the wild. When salmon swim up the river to lay their eggs, eagles gather in big groups along rivers and creeks to eat them. Did you know that during the peak season, eagles can eat up to a whole pound of salmon in one day? As you look at the statue, you'll see the swooping eagle has just caught a big salmon in its sharp talons, and the fish is thrashing around in the water. It's an epic battle between two mighty creatures fighting to survive. Can you guess who will win?



## Copper Clad a horse

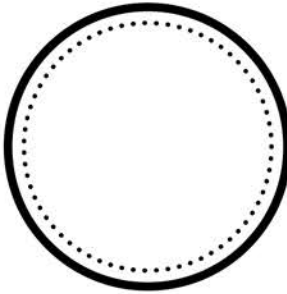
356 Front St North  
Issaquah, WA

Giddy up! Can you follow the old railroad tracks to find a horse made of old metal parts? This rusty masterpiece stands tall at 7 feet and weighs a whopping ton! *Copper Clad* was created by the artist Jason Paul Dillon in 2007 when he was only 23 years old. Inspired by the artwork of the renowned sculptor Dan Klennert, Jason scoured junkyards and collected chains, wrenches, pitchforks, springs, gears, horseshoes, and other scrap metal pieces from his family's backyard. While walking around this sculpture, take a closer look, and you'll spot a unique detail - a heart made of an old tractor clutch with flaked red paint. Notice how even discarded materials can be used to create something truly beautiful.



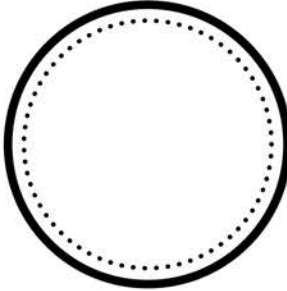
**Gilda & Finley**  
a pair of Coho salmon

Issaquah Salmon Hatchery  
Issaquah, WA



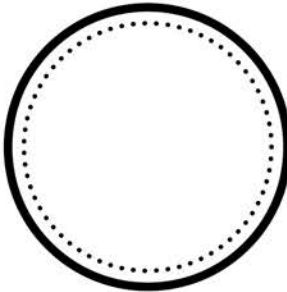
**Hunting Eagle**  
an eagle & salmon

Issaquah Salmon Hatchery  
Issaquah, WA



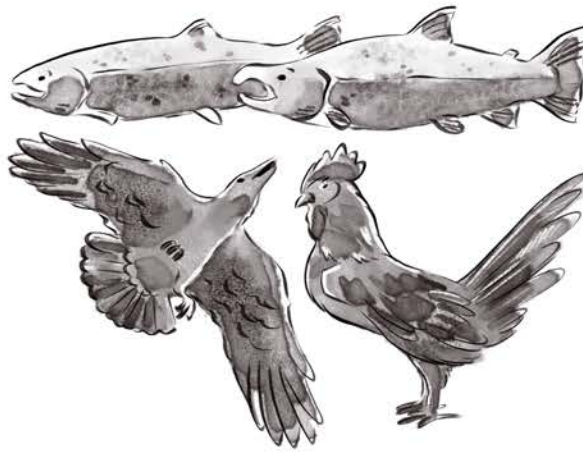
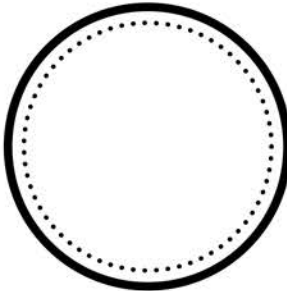
**Soaring Raven**  
a raven

Issaquah Library  
Issaquah, WA



**Guardian Lions**  
also known as lion dogs

Macky's Dim Sum  
Issaquah, WA



ISSAQUAH, WA

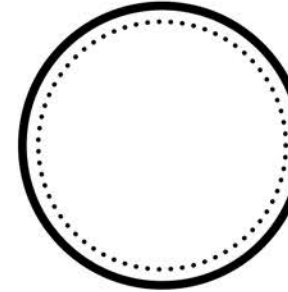
# ANIMAL STATUE SCAVENGER HUNT

CAN YOU FIND THEM ALL?  
1-HOUR LOOP WALK

BY POLINA GORTMAN

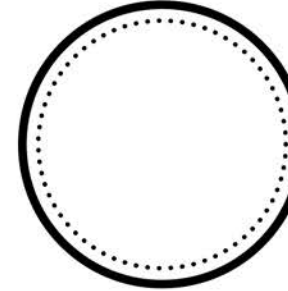
**Roaring Bear**  
a bear

Rolling Log Tavern  
Issaquah, WA



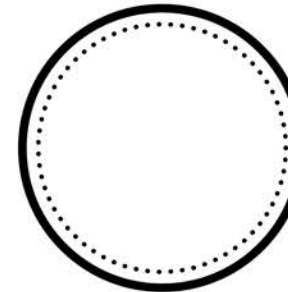
**Valiant Effort**  
an eagle & a salmon

Issaquah City Hall  
Issaquah, WA



**Copper Clad**  
a horse

Shell/Hailstone Feed Store  
Issaquah, WA



**McNugget**  
a rooster

628 Front St North  
parking lot  
Issaquah, WA

